

Establishment of Child Poverty Research



Head Investigator	Tokyo Metropolitan University, Graduate School of Humanities, Professor Research Center for Child & Adolescent Poverty, Director
	ABE Aya Researcher Number:60415817
研究領域情報	Number of Research Area : 22A101 Project Period (FY) : 2022-2026 Keywords : poverty, poverty database, EBPM, deprivation scale

Purpose and Background of the Research

●Outline of the Research

This research field constructs a large-scale database on child poverty and creates evidence-based policy recommendations to local and national governments, NGOs and communities. By doing so, the field combines researchers from multiple academic fields and nurture young researchers with interdisciplinary minds, leading to the establishment of poverty research in Japan.

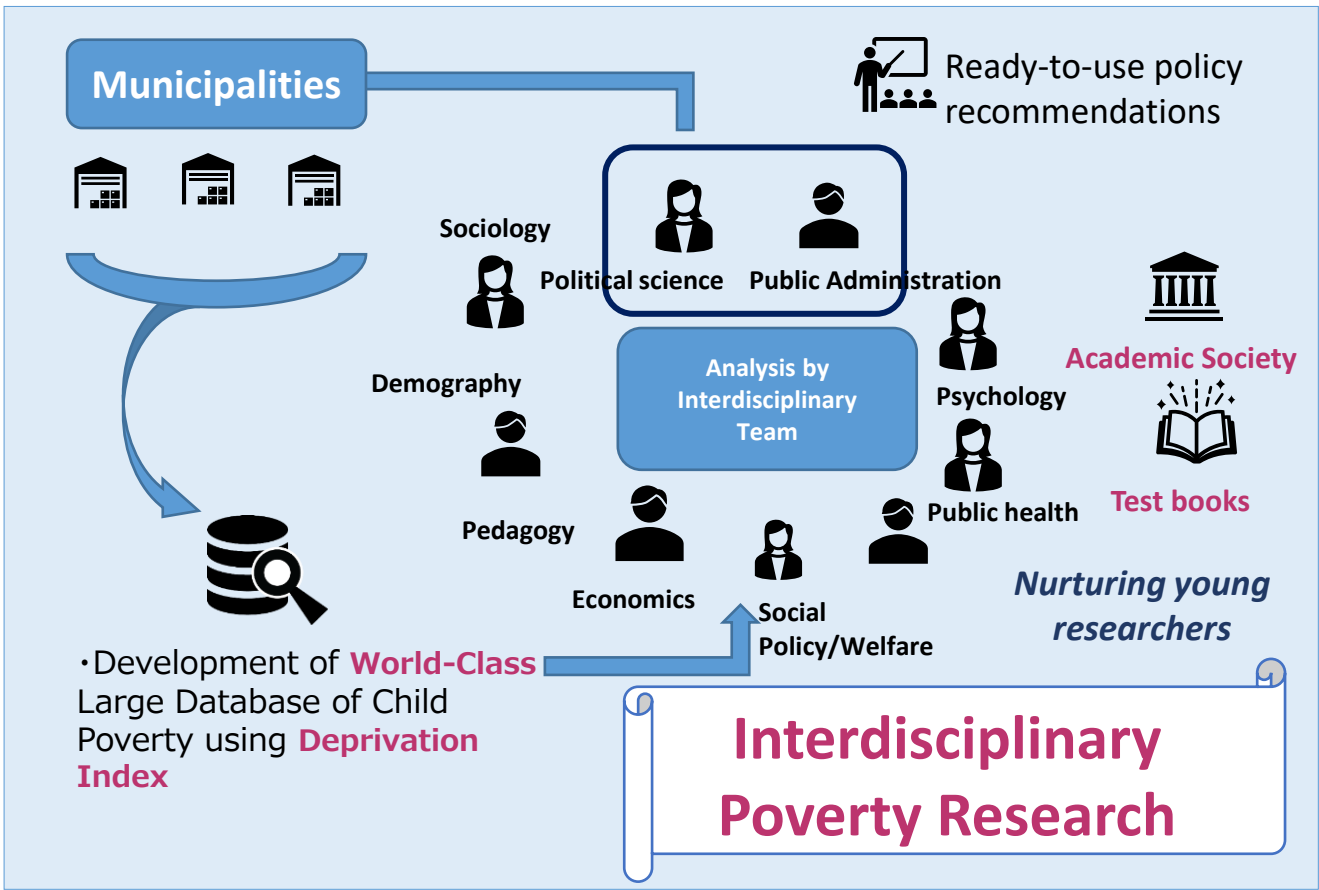


Figure 1. Outline of the Project

●From an variable to an academic field

Background of the Field : In Japan, poverty was a long-forgotten social issue and there was a 40 year period where research on poverty was rarely conducted. However, since the Lehman Shock in 2008, the research using poverty as one of the explanatory variables expanded drastically in various academic fields. Yet, poverty remains as one of the “hot” topics of the moment, and already the interest in poverty is waning. The reason for that is young researchers in each academic field interested in poverty are isolated in their own field and that there is no common platform and definition where researchers from different backgrounds can discuss poverty.

● **The 60% of the fund is used for Young Researchers**

- 30 Publically called Mini projects
- **The research fund with mentoring from senior researchers**
- Hands-on Experience for Researchers in training
- **Hiring graduate students and Post-Doc fellows**
- Intensive collaboration with overseas researchers
- **Participating international conferences**

● **Development of World-Class Large Database of Child Poverty using Deprivation Index**

- Incorporating survey data conducted by multiple local governments to create **large-scale database on child poverty**
- Conducting additional large-scale survey on child poverty to supplement local government data.
- Development of Japanese child poverty index using deprivation

Survey data from Municipalities

Equivalized Large-scale child poverty database



Expected Research Achievements

● **Empirical Research to provide Ready-to-use Policy Recommendations**

The database will enable research on mechanism connecting poverty and various child outcomes, and how geographical attributions, gender, immigrant status, health status of children and their family interact with the mechanism.

Construction of Japanese Deprivation Index

Regional

Gender

Immigrants

Health

Returning the Fruits of Research



Academic Community

- Establishment of Poverty Study at **Educational Institutions** ⇒ Text Books
- **Establishing Interdisciplinary** academic community
- Establishment of **「New Interdisciplinary field」**



Text books



Analysis



Local and Municipal governments

- **Tailor-made analysis** for municipalities which provide data for the database
- **Training** courses/materials for government officials



Training



National Government · Public · NPO · Community

- **Policy recommendations** for the national government
- **Advocacy** materials & statistics

