


International Strategic Research Alliance for Sustainable Socio-Economic Recovery from the COVID-19 Pandemic in Japan and Asia

	Principal Investigator	The University of Tokyo, Graduate School of Economics, Professor SAWADA Yasuyuki Researcher Number : 40322078
	Project Information	Project Number : 22K21341 Project Period (FY) : 2022-2028 Keywords : Pandemic, SDGs, EBPM, Human resource development

Purpose and Significance of the Research

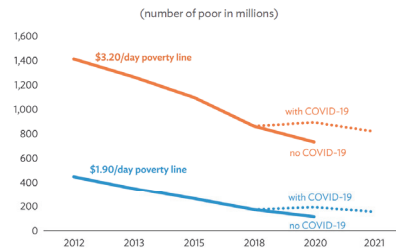
● Towards effective recovery and SDGs achievement

The global spread of the coronavirus disease (COVID-19) has reaffirmed that disasters can devastate societies and economies, including individual livelihoods and businesses, and create enormous negative impacts, especially on the poor, the vulnerable, and micro-enterprises. Recognizing the growing consensus that understanding and addressing disaster risks, resilience, and sustainability of development in Japan, Asia, and the world is imperative to achieve Sustainable Development Goals (SDGs), the research strategy of this project is to form a strategic international research alliance with the following three research pillars to promote "evidence-based policymaking" and "policy-based evidence-making" in Japan and Asia. Accordingly, this research is very urgent, generating substantial social impacts

● Three pillars to support the recovery of firms, governments, and livelihoods

In addition to conventional microdata, we employ using the latest econometric methods with alternative large-scale data; and:

1. rigorously identify the socioeconomic impact of COVID-19
2. contribute to a robust recovery from the pandemic and the achievement of the SDGs through the policy research
- (3) revive a viable academic collaboration to nurture the development of internationally competitive early-career researchers.



COVID-19 = coronavirus disease.
Notes: Developing Asia refers to the average of 34 Asian Development Bank (ADB) developing member countries. For 2018, India's estimates were based on extrapolations using the World Bank's model-based mean per capita expenditure in 2015, gross domestic product per capita growth rates between 2015 and 2018, and distribution based on the 2011-2012 household consumption survey.
Source: J. Bulan et al. 2020. COVID-19 and Poverty: Some Scenarios. Manila (unpublished note prepared for the Economic Research and Regional Cooperation Department, ADB).

Fig.1 Poverty trend in developing Asia



Fig.2 Project overview

Organization of the Project Team

● Globally Competitive and Interdisciplinary Policy Research Group

The PI of this project, Yasuyuki Sawada, is Director of the Center for Research and Education in Program Evaluation (CREPE) who was Chief Economist of the Asian Development Bank and Director General of its research department. The Japan-side team is composed of CREPE-affiliated Professors who are all globally renowned scholars in each field of economics with impressive publication records in top journals such as PNAS, Nature Sustainability, and American Economic Review as well as extensive research collaboration networks with the central and local governments, private firms, NGOs. The core international joint institutions and researchers are Harvard University (Public Health), Professor Ichiro Kawachi; University College London (Economics), Professor Christian Dustmann; and Asian Development Bank (ADB) Chief Economist and Director General of ADB's Economics Research and Regional Cooperation Department (ERCD), Dr. Albert F. Park. We will form a competent and globally competitive international research alliance

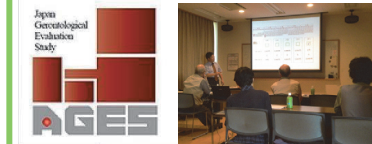


Fig.3 Joint experiments conducted with Prof. Ichiro Kawachi's team from Harvard University



Fig.5 joint conference with UCL and other institutions at the University of Tokyo in December 2022



Fig.4 Joint ADB University of Tokyo Conference

Plan for Fostering Early-career Researchers

● Past Achievements in Human Resource Development

From FY2017 until FY2019, CREPE offered the Advanced Human Resources Development Program for Policy Evaluation (hereafter, "Advanced Human Resources Program") for students from the Graduate School of Economics at the University of Tokyo. CREPE (1) provided incentives to improve their academic research, and (2) offered on-the-job training in collaboration with the affiliated faculty members and researchers to organize empirical, policy-oriented projects. Under the program, CREPE recruited a total of 24 students who have published papers in top journals such as Journal of Health Economics. Some students entered globally top Ph.D. programs in overseas universities such as University College London and the University of California, Berkeley.

● Renewed Plan of the Advanced Training Program for Policy Evaluation

While the Program has been suspended due to the COVID-19 pandemic, we plan to re-establish and strengthen it. To absorb a variety of affiliated early-career researchers, CREPE will utilize official positions and arrangements specified by the Graduate School of Economics of the University of Tokyo. Also, we will introduce the "pre-doctoral researcher program" for the first time in Japan. These positions will include around 8 full-time and part-time Project Research Associates, and 12 Project Researchers. Policymakers and private sector personnel will also be involved in the program to foster an interactive education program that links the university, government, and society. To facilitate a proactive international exchange of early-career researchers, we plan to dispatch those researchers to overseas partner research institutions such as Harvard University, University College London, and Asian Development Bank as well as other partner institutions of the University of Tokyo.