	Head Investigator	Tokyo Metropolitan University, Graduate School of Humanities, Professor YAMADA Yasuhiro Researcher Number:40264270
	Research Area Information	Number of Research Area : 23A102 Project Period (FY) : 2023-2027 Keywords : archaeology, anthropology, bioarchaeology,

Purpose and Background of the Research

● Outline of the Research

In this area of research, we advocate to promote "integrated bioarchaeology," a comprehensive academic field that combines current archaeological methods with natural science methods such as dating, isotope analysis, and genome analysis, focusing mainly on excavated materials, especially human remains, animal and plant remains, in the Japanese archipelago.

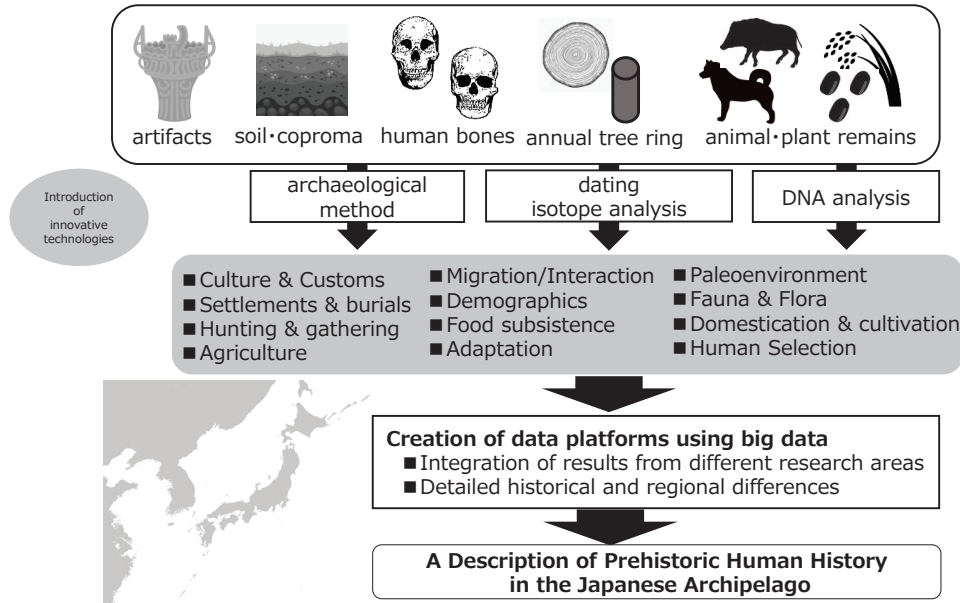


Figure 1. Outline of the Project

● Now, Japanese archaeology is in need of change.

Background of Research: Today, the archaeology of the Japanese prehistory is at a major turning point. It has already become clear that it is extremely difficult to approach the real image of the past using only conventional archaeological methods, and archaeology itself needs to be reborn as a new discipline incorporating physical and chemical methods if it is to develop further in the future. Therefore, we propose the construction of an "integrated bioarchaeology" in Japan, in which the main object is excavated materials such as human bones, animal and plant remains, and the history is reconstructed by incorporating natural scientific methods such as dating, isotope analysis, and genome analysis into the current archaeological methods.

● Maintenance and publication of research materials and methods

In order to build a shared platform for research data, we will create and publish a database of excavated human remains and the results of various analyses, and make it widely available for use. We will also create a new academic framework that integrates archaeology and the natural sciences as comprehensive knowledge.

● Fostering young talent capable of hybrid research

Through this research, we will nurture the next generation of outstanding human resources who can transcend the boundaries of the humanities and sciences to play an active role on an international level. In addition, we conduct various field schools and seminars to train researchers who can handle hybrid research.



Figure 2. Image of the analysis of excavated human bones

Expected Research Achievements

● We will present a new theory of the Japanese species from an integrated bioarchaeological perspective and a historical description of the prehistory

We advocate and practice an integrated bioarchaeology that uses archaeological methods plus morphology, dating, isotope analysis, and DNA analysis as core methodologies for historical description. This will allow us to reexamine the prehistory of the Japanese archipelago and present a "new theory of the formation of the Japanese"

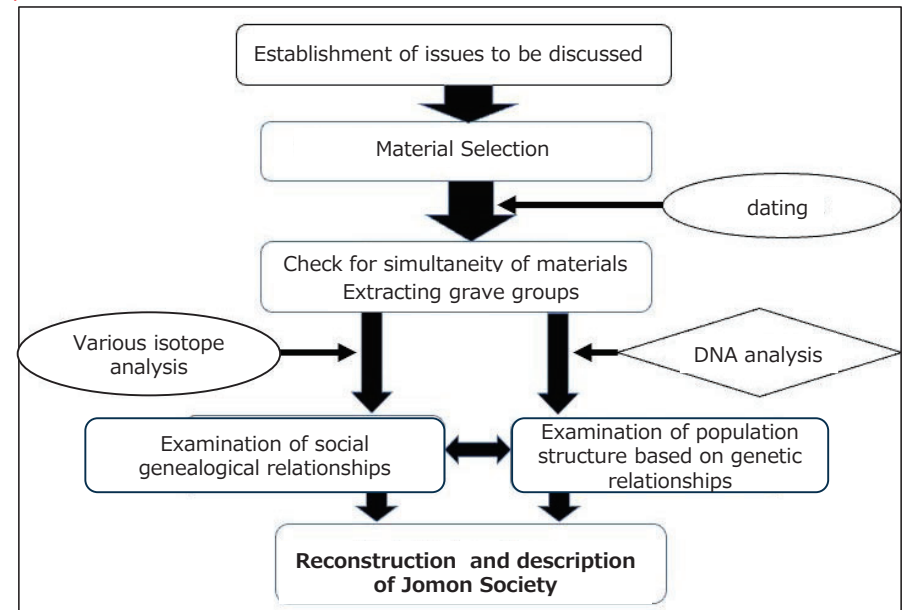


Figure 3. A new methodological model of historical narrative using the Jomon period as an example